

INTERPRETIVE EXHIBITS CONCEPT



The Grand Canyon River Heritage Museum is visible from the South Rim hotels and reached by convenient walkways. Illustration: Chris Grubbs

THE SIBBETT GROUP

THE GRAND CANYON RIVER HERITAGE MUSEUM

The Grand Canyon River Heritage Museum provides an authentic visitor experience that inspires Grand Canyon visitors to make meaningful connections with Colorado River boats. The new building design and interpretive exhibits will instill visitors with a feeling of excitement and adventure about Grand Canyon river trips, as well as a sense of stewardship for the Colorado River.

The museum design celebrates the design and evolution of Grand Canyon river boats and encourages visitors to participate in activities that help pique a genuine curiosity about boating on the Colorado River.

The architectural design uses the vertical space of the building to display a wide variety of boats. The exhibit design approach uses storytelling to bring the boats to life, reflecting the spirit of *These Boats Will Speak*. Organizing the boats chronologically, the interpretive exhibits highlight the design evolution of the boat collection. Complimenting the boats are photographs, video and artifacts, all combined to convey the compelling past, present and future stories about river running on the Colorado River.

ARRIVING AT THE NEW GRAND CANYON RIVER HERITAGE MUSEUM

Entry Area, Information Desk, Restrooms and GCA Store

Visible from the South Rim hotels and reached by convenient walkways, the Grand Canyon River Heritage Museum is an enticing visitor destination. On the south side of the building, a sheltered porch includes a welcoming sign indicating the building entry. As visitors move into the Entry Area they are greeted by friendly staff at a broad information desk. Identification graphics, including a National Park Service arrowhead, are displayed behind the desk.

GRAND CANYON RIVER HERITAGE MUSEUM

INTERPRETIVE EXHIBITS CONCEPT - CONTINUED



A re-creation of the John Wesley Powell's Emma Dean will be the centerpiece of the Orientation Gallery.

Photo: GRCA 14772



An intimate theater shows a variety of short productions, instilling in viewers a sense of excitement and adventure. Photo: Getty Images Photo: GRCA 14772

Signage on the information desk invites visitors to borrow hand-held devices, or call a number from their own hand-held, accessing multimedia programs that compliment the museum experience.

As visitors move through the entry area they will notice the restrooms, as well as the GCA Store, which can easily be visited before or after their museum experience.

EXPERIENCING THE NEW GRAND CANYON RIVER HERITAGE MUSEUM

Orientation Gallery, Theater, Main Gallery

From the Entry Area and Information Desk visitors move into the Orientation Gallery, where they encounter a unique centerpiece, the *Emma Dean*. This re-creation of one of John Wesley Powell's 1869 boats is contextualized by a large wall-mounted Grand Canyon map. An open floor plan provides a flexible space for special events, temporary exhibitions or Kolb Brothers-inspired movie nights. Large glass doors lead onto the Outdoor Patio, where a contemporary inflatable boat creates an interesting juxtaposition with the historic *Emma Dean*. Normally locked, the doors are sized to move boats in and out of the museum and can be opened during special museum events when the Outdoor Patio is used for spill-out space.

From the Orientation Gallery, visitors enter the Theater, where they will experience inspiring productions about running the Colorado River. The Theater shows a variety of short films that incorporate repurposed historic footage from the Park's collection, as well as vivid contemporary footage. These high-quality productions will highlight memorable people and events, instilling in viewers a sense of excitement and adventure for running the Colorado River. During special events the Theater can be used for small lectures, talks or programs.

GRAND CANYON RIVER HERITAGE MUSEUM

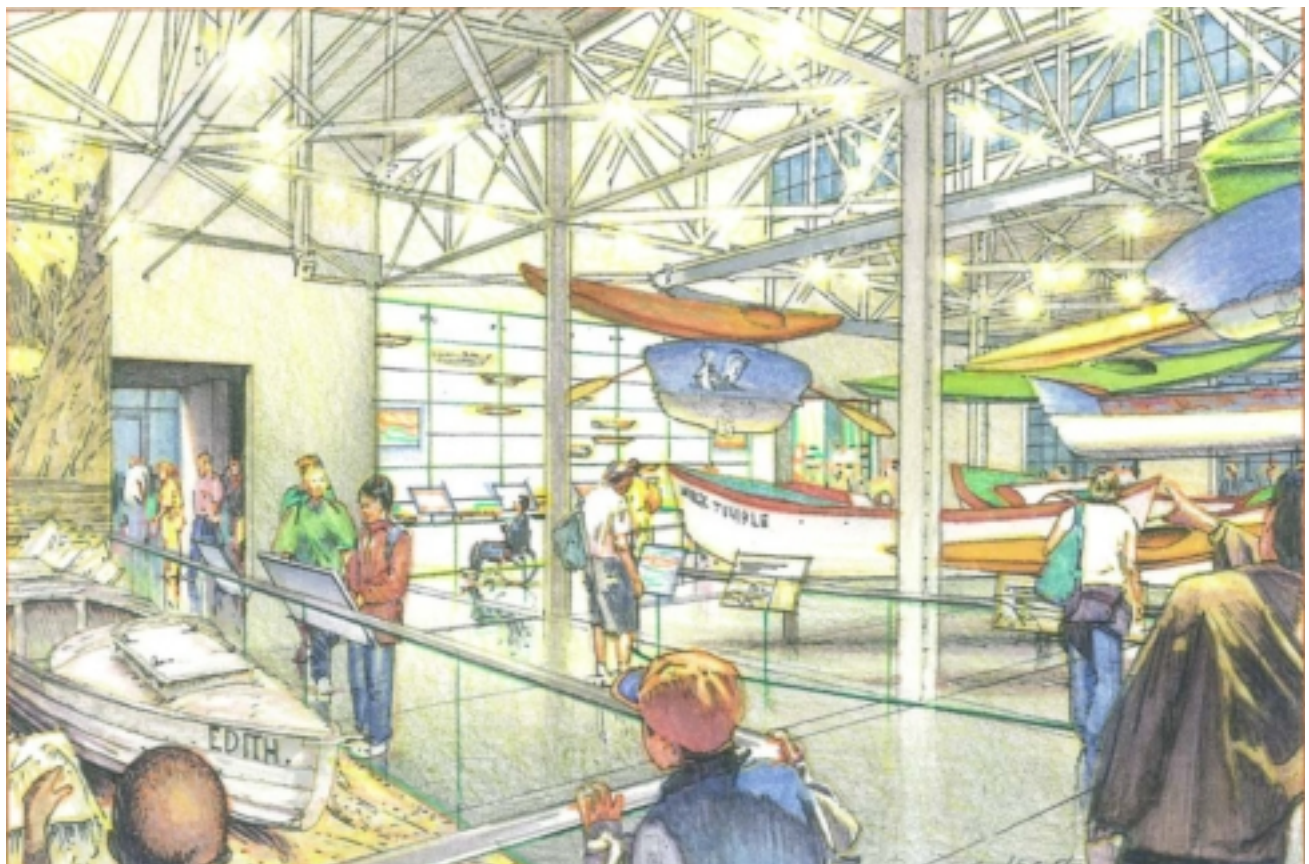
INTERPRETIVE EXHIBITS CONCEPT - CONTINUED

As visitors enter the Main Gallery they will experience a unique collection of boats. Arranged chronologically and grouped into three distinct themes, the boat collection reflects a period spanning from 1909 to 1963. The three distinct themes represent pre-World War II boats, early powerboats and an array of contemporary boats, which serve as the centerpiece of the Main Gallery.

To both interpret and protect the boats in each of the three sections, the boats have interpretive content mounted onto a glass guardrail. This rail displays a touch-screen monitor and interpretive graphics, enabling visitors to discover more about each boat.

Beginning the chronology at 1909, the Pre-World War II boats will be displayed in a traditional diorama setting. Giving context to the diorama is a large photographic backdrop. In the foreground is a sandy beach with rocks along the bank of the Colorado River. On the sandy beach are historic boats, including the *Stone*, *Edith*, *WEN* and *Escalante*. The glass guardrail in front of the diorama provides interpretation for each boat, including a touch screen monitor and interpretive graphics.

Moving on in the chronology, Early Powerboats will also be displayed in a diorama setting. A large photographic background helps provide context for a small beach



The exhibit layout uses both the floor and vertical space of the building to display a wide variety of boats.

Illustration: Chris Grubbs

GRAND CANYON RIVER HERITAGE MUSEUM

INTERPRETIVE EXHIBITS CONCEPT - CONTINUED



Exhibits in the Main Gallery help convey the innovative spirit and inventive qualities of Grand Canyon boating.

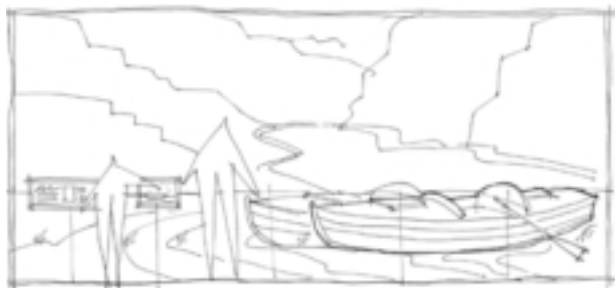
with river water. One of the boats, the *Wee Red*, is displayed in a dynamic position, as if cresting a large rapid. Other boats in this diorama include the *Esmeralda II* and the *Georgie*. The glass guardrail in front of the diorama provides interpretation for each boat, including a touch-screen monitor and interpretive graphics.

Completing the chronology is the centerpiece of the main gallery, the existing collection of Contemporary Boats enhanced with future acquisitions. Displayed at various heights as if floating through the space, the boats in this exhibit include the *Music Temple*, the *Kirschbaum Kayak* and the *Sport Yak II*. Future acquisitions will likely include significant dories, canoes, kayaks and self-bailing inflatables. The glass guardrail surrounding the centerpiece provides interpretation for each boat, including a touch-screen monitor and interpretive graphics.

Two additional exhibits in the Main Gallery help convey the innovative spirit and inventive qualities of boating in the Grand Canyon, captured in the evolution of gear and boats used on the Colorado River.

The Gear Display, a wall that displays an evolution of boat gear, combines various interpretive techniques. Visitors are encouraged to discover more about gear that interests them by exploring touch-screen monitors, high definition imagery, touchable objects, protective artifact displays, interpretive graphics and interactive exhibits.

Contextualizing the evolution of Grand Canyon River boats is the River Histomap, a large linear timeline. This three-dimensional graphic clearly communicates through concise text and boat models displayed on the wall. Touch-screen monitors at the base of the River Histomap invite visitors to learn more about subjects of interest to them including boat designs, historic figures



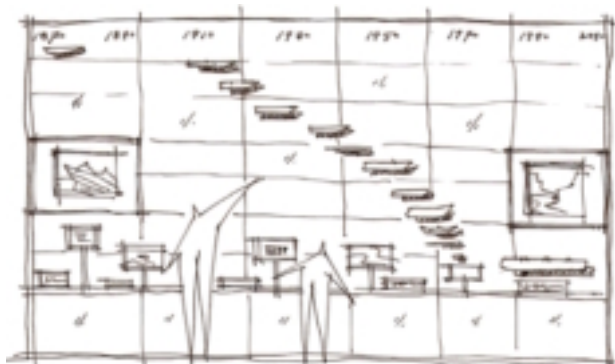
Beginning in 1909, pre-World War II boats are displayed in a sandy beach diorama setting.

GRAND CANYON RIVER HERITAGE MUSEUM

INTERPRETIVE EXHIBITS CONCEPT - CONTINUED



A glowing glass wall displays an evolution of boat gear and combines various interpretive techniques.



A large linear timeline with boat models, concise text and high-definition video communicates the evolution of Grand Canyon boats.

and trip histories. Placed at the ends of the timeline, monitors and interpretive graphics inform visitors about 21st Century issues. Here visitors will become informed of river management and can contemplate a stewardship message about the future of the Colorado River and the Grand Canyon.

As visitors exit the Main Gallery, they can visit the GCA Store to find interesting collectibles about the historic boats and stories of the Colorado River.

GETTING INSPIRED TO GET ON THE RIVER

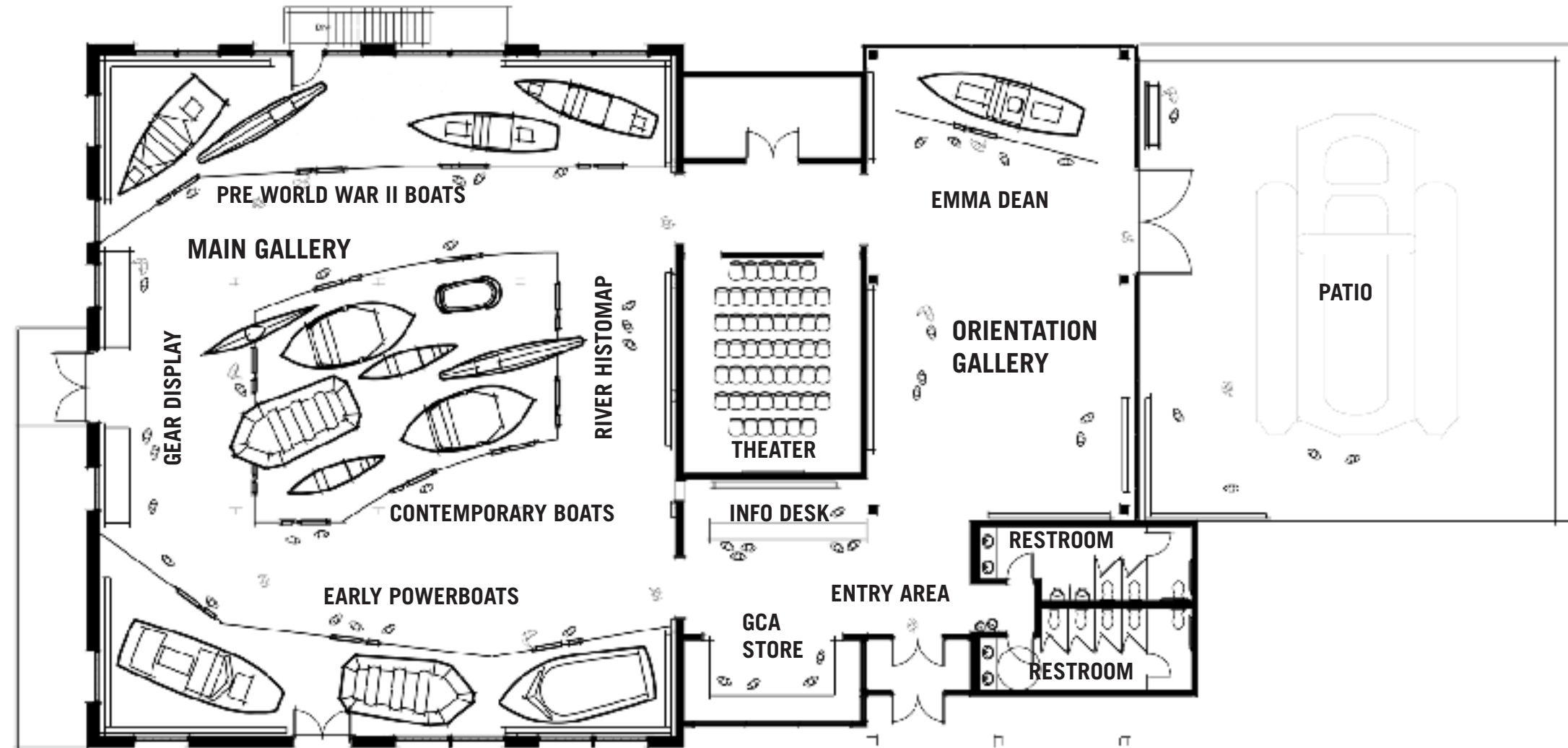
The Patio and Docent-led Programs

Visitors can continue to explore Grand Canyon boats by interacting with a contemporary boat in the Patio. This boat, an inflatable, makes for an ideal photo opportunity of the adventure to be had on the Colorado River. Visible through the glass wall and oversized loading doors of the building, visitors will notice the historic *Emma Dean* displayed in the Orientation Gallery. The Patio can accommodate additional boats displayed for special programs, as well as spill-out space for indoor museum events.

In addition to the inflatable boat, interpretive graphics and durable interactive exhibits are placed in the Patio to encourage visitors to learn more about river rafting and how to take a boat trip.

Environmental Education activities enhance the Grand Canyon River Heritage Museum experience. Using an inflatable and other props, visitors can get a taste for the excitement and adventure of exploring the Grand Canyon, including loading a boat, river camping, rowing a boat and even boat building. Ultimately, the new museum is designed to instill in visitors a feeling of excitement and adventure about Grand Canyon river trips.

GRAND CANYON RIVER HERITAGE MUSEUM
INTERPRETIVE EXHIBITS CONCEPT - FLOOR PLAN



GRAND CANYON RIVER HERITAGE MUSEUM

INTERPRETIVE EXHIBITS CONCEPT - BOAT DISPLAYS



Freestanding in the Orientation Gallery, a re-creation of the John Wesley Powell's Emma Dean will be supported by a light and airy cradle. GRCA 17251



Inspired by Kolb Bothers photography, pre-World War II boats will be displayed in a sandy beach diorama setting. GRCA 17171.

RECOMMENDATIONS FOR BOAT DISPLAYS

The new Grand Canyon River Heritage Museum will provide visitors with an authentic experience that inspires Grand Canyon visitors to make meaningful connections with Colorado River boats. Visitors to the new museum will experience a truly unique collection of boats. The boat collection reflects a period spanning from 1909 to 1963 representing Pre-World War II boats, Early Powerboats and an array of Contemporary Boats.

Emma Dean

From the Entry Area and Information Desk visitors move into the Orientation Gallery where they encounter a unique centerpiece, the *Emma Dean*. A large photographic backdrop contextualizes this re-creation of one of John Wesley Powell's 1869 boats. The *Emma Dean* is freestanding in the Orientation Gallery and supported by a custom stainless steel cradle. The cradle is light and airy and the craftsmanship is of the highest appropriate quality. The glass guardrail in front of the *Emma Dean* protects the boat and provides interpretation including a touch-screen monitor and interpretive graphics.

Pre-World War II Boats

The Pre-World War II boats will be displayed in a traditional diorama setting. Giving context to the diorama is a large photographic backdrop. In the foreground is a sandy beach with rocks along the bank of the Colorado River. On the sandy beach are displayed boats, including the *Stone*, *Edith*, *WEN* and *Escalante*. Concealed custom powder-coated steel cradles support the boats. Cradles provide continuous support to the keel and four cradling points along the hull. A glass guardrail in front of the diorama protects the boats and provides interpretation for each boat, including a touch-screen monitor and interpretive graphics.

GRAND CANYON RIVER HERITAGE MUSEUM

INTERPRETIVE EXHIBITS CONCEPT - BOAT DISPLAYS



Floating within the Main Gallery space, contemporary boats will be suspended in an array by thin wire. Photo: Canadian Canoe Museum.

Early Powerboats

Early powerboats will also be displayed in a traditional diorama setting. A large photographic background helps provide context for a small beach with river water. One of the boats, the *Wee Red*, is displayed in a dynamic position, as if cresting a large rapid. Other boats in this diorama include the *Esmeralda II* and the *Georgie*. A concealed custom powder-coated steel cradle provides continuous support to the keel and four cradling points along the hull support each boat. A strategy for maintaining engine fluids within each motor will be developed with the Small Boat Curator at the San Francisco Maritime National Historic Park to ensure the proper stabilization of each boat. A glass guardrail in front of the diorama protects the boats and provides interpretation for each boat, including a touch-screen monitor and interpretive graphics.

Contemporary Boats

The existing collection of contemporary boats will be enhanced with future acquisitions and displayed at various heights, as if floating through the space. The boats in this exhibit include the *Music Temple*, the *Kirschbaum Kayak* and the *Sport Yak II*. Future acquisitions will likely include significant dories, canoes, kayaks and self-bailing inflatables.

Some boats are located near the floor and are supported by custom stainless steel cradles providing continuous support to the keel and four cradling points along the hull. Floor mounted cradles should be as light and airy as possible and the craftsmanship will be of the highest appropriate quality. Other boats are suspended by stainless steel wire hanging systems connected to either transparent slings or custom powder-coated aluminum internal frames. Hanging boats are securely anchored to the building's existing trusses. A strategy for hang-



Early powerboats will be displayed in a dynamic river diorama setting that is inspired by 1960 Bill Belknap up-run photography. Photo: Bill Belknap

GRAND CANYON RIVER HERITAGE MUSEUM

INTERPRETIVE EXHIBITS CONCEPT - BOAT DISPLAYS

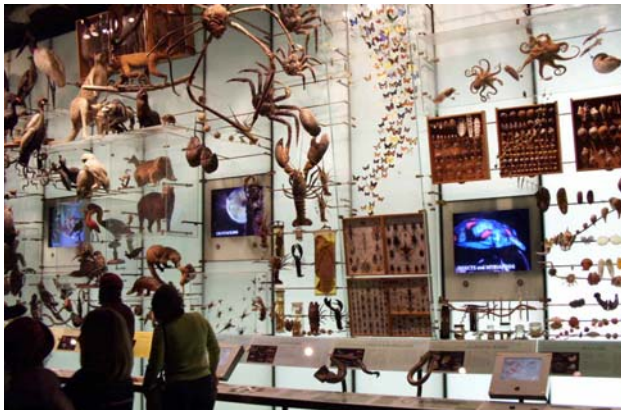


An inflatable boat similar to *Georgie* will be located on the Patio.

ing boats in a manner that does not deform the boat hulls will be developed with the Small Boat Curator at the San Francisco Maritime National Historic Park. A glass guardrail in front of the display protects the boats and provides interpretation for each boat, including a touch-screen monitor and interpretive graphics.

Inflatable

Visitors can continue to explore Grand Canyon boats by interacting with a contemporary boat in an adjacent Patio. This inflatable boat, similar to *Georgie*, makes for an ideal photo opportunity. The boat is securely anchored to the patio and provides reasonable access to the boat for all ages and abilities.



Visitors will discover more about boat gear, by exploring touch-screen monitors, high-definition videos and artifact cases. Photo: AMNH

RECOMMENDATIONS FOR GEAR DISPLAYS

A prominent exhibit in the Main Gallery will help convey the innovative spirit and inventive qualities of boating in the Grand Canyon, captured in the evolution of gear and boats used on the Colorado River. The Gear Display, a wall that displays an evolution of boat gear, combines various interpretive techniques. Visitors are encouraged to discover more about gear that interests them by exploring touch-screen monitors, high-definition imagery, touchable objects, protective artifact display cases, interpretive graphics and interactive exhibits. The Gear Display includes many of the artifacts from the Park's collection.

GRAND CANYON RIVER HERITAGE MUSEUM

INTERPRETIVE EXHIBITS CONCEPT - GEAR DISPLAYS



An array of wall mounted objects will capture the evolution of boat gear used on the Colorado River. Photo: Tahoe Maritime Museum.



The Gear Display includes artifacts from the Park's collection, including Norm Nevills' blue hat. Photo: J. Eden GRCA 05584

Artifacts and objects would likely include:

Powell Related

Artifacts - Expedition photos, hull fragment
Objects - Surveying Equipment, Oars
Books - [A Canyon Voyage](#), [Report Upon the Colorado River](#), [Colorado River Controversies](#)
Journals - Walter Clement Powell Diaries,

Pre-World War II Boats – General Related

Objects - Oars, Tools, Line, Repair Materials, Buckets, Food, Camera Gear, Journals, Pencils, Camping Gear, Herbarium Prints and Sketches

Pre-World War II Boats - Stone

Artifacts - Life jacket, Cooking Items
Book - [Canyon Country](#)

Pre-World War II Boats – Kolb

Artifacts - Expeditions Photos
Book - [Through the Grand Canyon from Wyoming to Mexico](#)

Pre-World War II Boats – Nevills

Artifacts – Life Jacket, Norm's Hat, Trip Photos and Newspaper articles
Book - [Floristic Studies of the Grand Canyon and Tributaries](#)
Journals - Nevill's notes from Tapeats Creek Register, Clover Diaries

Early Powerboats – General

Objects - Gas Cans, Oil Cans, Tools, Camping Gear, Canned Food, Outboard Motors

Early Powerboats - Esmeralda II

Artifacts - Oars, Oar Locks, Expedition Photos, Ignition Key

Early Powerboats – Georgie

Artifacts - Baseball Caps and photos
Journals from Clients

Early Powerboats - Wee Red

Artifacts - Expedition Photos

Contemporary Boats – General

Artifacts / Objects - Oars, Journals, Paddles, Life Vests, Coolers, Food, Camping Gear

GRAND CANYON RIVER HERITAGE MUSEUM

INTERPRETIVE EXHIBITS CONCEPT - GEAR DISPLAYS



Visitors are invited to borrow hand-held multimedia guides that enhance their experience.

Outdoor Boat Display / Demo

Objects - 25+ Miscellaneous Objects to be determined

RECOMMENDATIONS FOR AUDIOVISUAL SYSTEMS AND PROGRAMS

The new Grand Canyon River Heritage Museum will offer visitors audiovisual systems and programs that use storytelling to bring the boats to life, reflecting the spirit of *These Boats Will Speak*. The museum will provide visitors with a variety of audiovisual opportunities including hand-held devices, cell-phone tours, touch-screen monitors, ambient video displays, ambient audio and an intimate high-quality theater.

Entry Area and Entire Museum

As visitors move into the entry area friendly staff at a broad Information Desk greet them. Identification graphics, including a National Park Service arrowhead, are displayed behind the desk. Signage on the information desk invites visitors to borrow hand-held devices, or call a number from their own hand-held, accessing multimedia programs that compliment the museum experience.

Audiovisual systems and programs would likely include:

Hand-held Guides

Equipment and system to be determined, but may include iPods and personal cell phones.

Audio Equipment

Digital Audio Equipment, twelve (12) Speakers throughout museum and an AV Rack.

GRAND CANYON RIVER HERITAGE MUSEUM

INTERPRETIVE EXHIBITS CONCEPT - GEAR DISPLAYS

Audio Program

Thirty (30:00) minutes of audio programming ranges from individual, discreet elements to all channels synchronized for a single experience. Includes original recording, stock effects, sound design and final orchestration in the exhibit environment.

Emma Dean

From the Entry Area and Orientation area visitors move into the Orientation Gallery where they encounter a unique centerpiece, the *Emma Dean*. A glass guardrail in front of the boat display provides interpretation through a touch-screen monitor and interpretive graphic panel.

Audiovisual systems and programs would likely include:

Audiovisual Equipment

One (1) 24", wide aspect ratio (16 x 9) touch-screen monitor with stainless steel bezel. A local computer and digital video equipment is concealed in a stainless steel metal frame to cover all buttons and wires. Open-audio is not recommended in this area.

Audiovisual Program

Included in Main Gallery below.

Theater

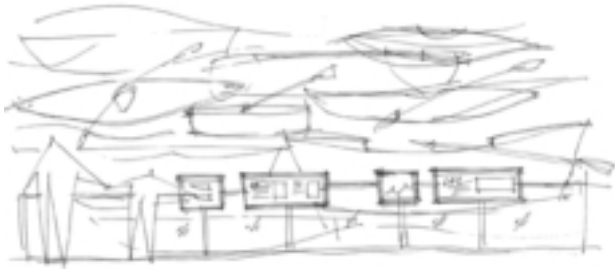
From the Orientation Gallery visitors enter the Theater where they will experience inspiring productions about running the Colorado River. The Theater shows a variety of short films that incorporate repurposed historic footage from the Park's collection, as well as vivid contemporary footage. These high-quality productions will highlight memorable people and events, instilling in viewers a sense of excitement and adventure for running the Colorado River. During special events the theater can be used for small lectures, talks or programs.



Theater productions will use repurposed footage from the Park's collection as well as vivid contemporary footage. Photo: Getty Images.

GRAND CANYON RIVER HERITAGE MUSEUM

INTERPRETIVE EXHIBITS CONCEPT - AUDIOVISUAL



Throughout the museum, touch-screen monitors and interpretive graphics are mounted on glass guardrails.

Audiovisual systems and programs would likely include:

Audiovisual Equipment

HD Projector, HD Player and Show Controller, Screen, Theater Audio System with Dolby Decoder, Amplifiers, Speakers and AV Rack.

Audiovisual Program

Four (4) high definition video, surround sound, exhibit-grade presentations with a total running time of approximately sixteen (16:00) minutes. Original footage supplements NPS provided footage and each program includes an original music score. All programs include on-screen titles.

Main Gallery

As visitors enter the Main Gallery they will experience a unique collection of boats. Arranged chronologically and grouped into three distinct themes, the boat collection reflects a period spanning from 1909 to 1963. The three distinct themes represent Pre-World War II Boats, Early Powerboats and an array of Contemporary Boats, which serve as the centerpiece of the main gallery. A glass guardrail in front of the boat displays provides interpretation for each boat through a touch-screen monitor and interpretive graphic panel.

Audiovisual systems and programs would likely include:

Audiovisual Program

Forty (40) short stories and eighty (80:00) minutes of content for the entire museum. All programs include on-screen titles.

Audiovisual Equipment

Eighteen (18) 24", wide aspect ratio (16 x 9) touch-screen monitors with stainless steel bezels. Each monitor is supported by a local computer and digital

GRAND CANYON RIVER HERITAGE MUSEUM

INTERPRETIVE EXHIBITS CONCEPT - AUDIOVISUAL



Main Gallery touch-screen monitors invite visitors to learn about Grand Canyon boat design, historic figures and trip histories.

video equipment concealed in a stainless steel metal frame to cover all buttons and wires. Discrete open-audio is recommended for audiovisual programs in this area.

Audio Equipment

Digital audio equipment, 5 track stereo playback capability and (2" x 1.5 " x 12") rectangular speaker array.

Gear Display

A prominent exhibit in the Main Gallery will help convey the innovative spirit and inventive qualities of boating in the Grand Canyon, captured in the evolution of gear and boats used on the Colorado River. Visitors are encouraged to discover more about gear that interests them by exploring touch screen monitors, high-definition imagery, touchable objects, protective artifact display cases, interpretive graphics and interactive exhibits.

Audiovisual systems and programs would likely include:

Audiovisual Equipment

Four (4) 24", wide aspect ratio (16 x 9) touch-screen monitor with stainless steel bezel. Each monitor is supported by a local computer and digital video equipment concealed in a stainless steel metal frame to cover all buttons and wires. Discrete open-audio is recommended for audiovisual programs in this area.

The lighting color of the rear-illuminated glass display wall is synchronized with the adjacent audiovisual production by a local computer, digital video equipment and a show controller concealed in an AV equipment cabinet concealed within the exhibit display table.

Audio Equipment

Digital audio equipment, 5 track stereo playback capability and (2" x 1.5 " x 12") rectangular speaker array.



River Histomap audiovisual programs include images, such as Dock Marston during the 1963 low water trip, and will inform visitors about stewardship messages. Photo: Bill Belknap NAU.PH.96.4.104.63

River Histomap

Contextualizing the evolution of Grand Canyon River boats is the River Histomap, a large linear timeline. This three-dimensional graphic clearly communicates through concise text and boat models displayed on the wall. Touch-screen monitors at the base of the River Histomap invite visitors to learn more about subjects of interest to them including boat designs, historic figures and trip histories. Placed at the ends of the timeline, monitors and interpretive graphics inform visitors about 21st Century issues. Here visitors will be informed of River Management and can contemplate a stewardship message about the future of the Colorado River and the Grand Canyon.

Audiovisual systems and programs would likely include:

Audiovisual Equipment

Two (2) 24", wide aspect ratio (16 x 9) touch-screen monitor with stainless steel bezel. A local computer and digital video equipment is concealed in a stainless steel metal frame to cover all buttons and wires. Discrete open-audio is recommended for audiovisual programs in this area.

The lighting color of the rear-illuminated glass display wall is synchronized with the adjacent audiovisual production by a local computer, digital video equipment and a show controller concealed in an AV equipment cabinet concealed within the exhibit display table.

Audio Equipment

Digital audio equipment, 5 track stereo playback capability and (2" x 1.5" x 12") rectangular speaker array.